

KOMATSU PW180-7E0

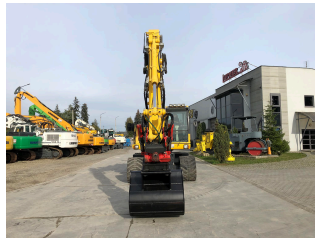


DODATKOWE INFORMACJE

Producent	KOMATSU
Waga [t]	19.9
Motogodziny	8853
Rok	2013

Categories: [Construction machinery](#), [Wheeled excavators](#)

Galeria produktu



Specyfikacja

- three-piece boom
- pan/tilt head
- Komatsu 116 kW
- shear/hammer hydraulics
- digging bucket
- rectangular blade
- Tire size: 315/70R22.5
- rear camera
- manual lubrication

- radio
- air conditioning
- work light

OPIS PRODUKTU

The 2013 **Komatsu PW180-7E0** wheeled excavator, offered by Lupher, has worked 8,853 motor-hours and weighs 19.9 tons. The machine is equipped with a triple-break arm and a tilt-rotary head, increasing its versatility on the job site. It is powered by a 116 kW Komatsu engine, providing adequate power for demanding tasks. In addition, the excavator has hydraulics suitable for operating a shear or hammer, a digging bucket and a rectangular blade, making it ideal for a variety of earthmoving jobs. Equipment includes 315/70R22.5 tires, a rear camera for added safety, a manual lubrication system, and operator amenities such as a radio, air conditioning and work lights for comfort and efficiency.