

## LEH SW\_CAT M318 HYDRAULIC QUICK COUPLER

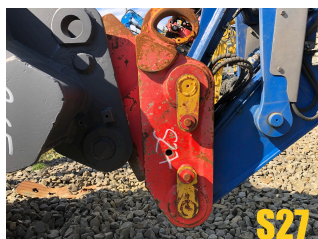


### DODATKOWE INFORMACJE

Numer katalogowy S27

Categories: [Accessories](#), [Quick couplers](#)

### Galeria produktu



### Specyfikacja

- SW\_CAT M318 mount
- 2015
- Pin diameter 60 mm
- Pin spacing 430 mm
- Width of quick coupler 270 mm